



## QUICK START

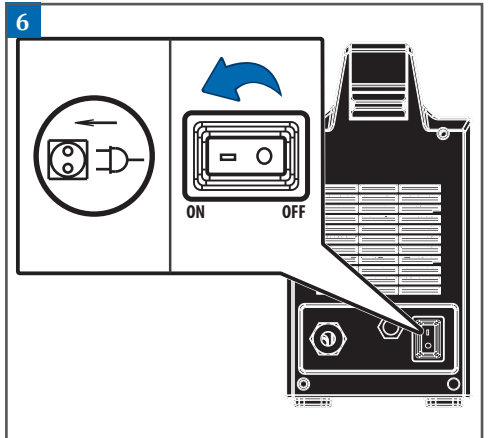
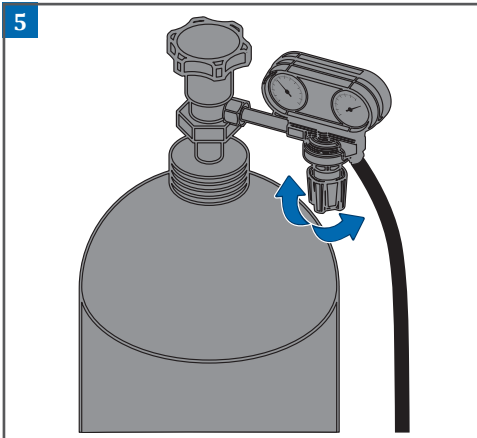
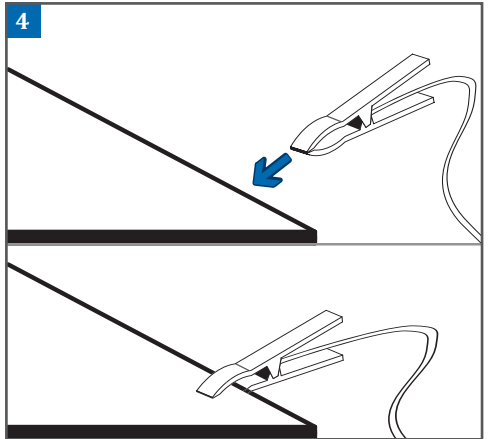
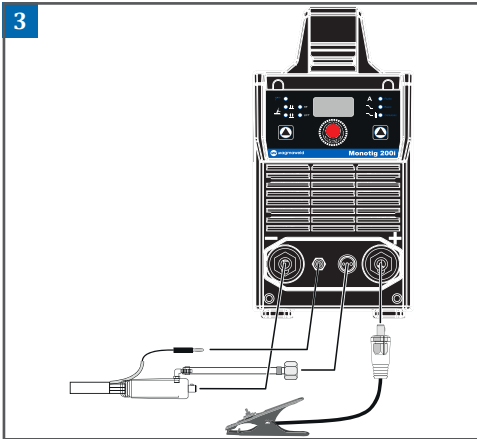
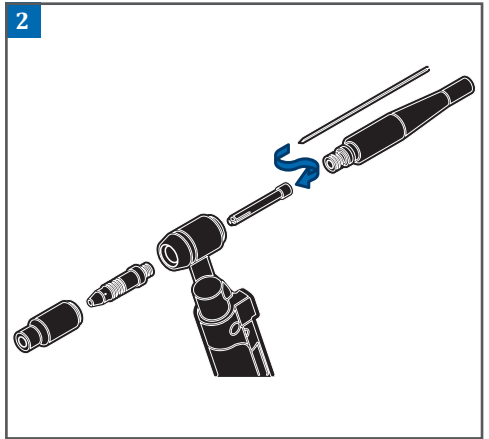
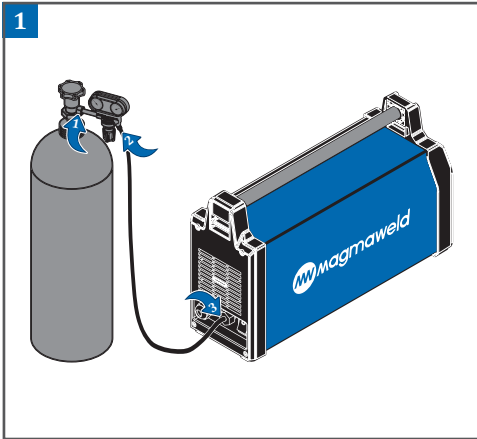
monoTIG Series



(+90) 444 93 53  
magmaweld.com  
info@magmaweld.com

 (+90) 538 927 12 62





7 MMA

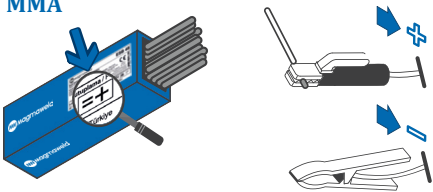
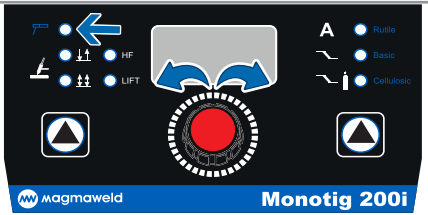
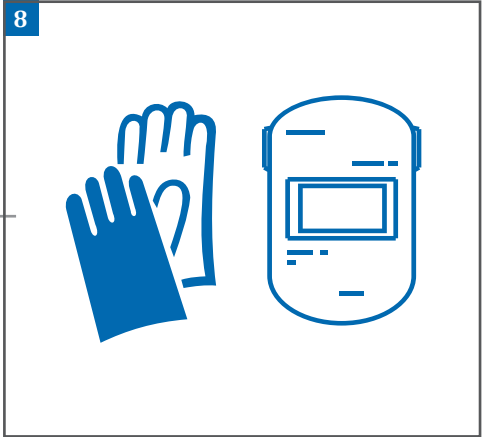


Illustration showing a box of MMA (Manual Metal Arc) electrodes and a welding torch. The box is labeled 'MMA' and 'magmaweld'. The torch is shown with a blue arrow pointing to the electrode holder and another blue arrow pointing to the electrode.



Control panel of the Monotig 200i. It features a central red dial with a scale from 0 to 200. To the left, there are buttons for 'HF' and 'LIFT'. To the right, there are buttons for 'A', 'Pulse', 'Basic', and 'Cellulose'. The 'magmaweld' logo is at the bottom left, and 'Monotig 200i' is at the bottom right.



9


Warranty Form  
Garanti Formu



A QR code with a shield icon in the center, used for accessing the warranty form.

10

monoTIG 200i



A QR code with a book icon in the center, used for accessing the monoTIG 200i manual.